

SMARTWEALTH RUPIAH EQUITY ROTATION CLASS B FUND

June 2022

BLOOMBERG: AZRPERB IJ

Investment Objective

The objective of this fund is to provide maximum long term investment yield.

Investment Strategy

To achieve the investment objective, this fund shall be invested 0 - 20% in short-term instruments and 80 - 100% in equity instruments implementing a sector rotation strategy.

Return Performance

Last 1-year Period	Mar-22	N/A
Best Month	Mar-22	7.49%
Worst Month	Jun-22	-6.84%

Portfolio Breakdown

Equity	85.32%
Money Market	14.68%

Top 10 Holding

(in Alphabetical Order)

Adaro Energy
Bank Central Asia
Bank HSBC Indonesia 1.5% 01/07/2022
Bank Mandiri Persero
Bank Negara Indonesia
Bank Rakyat Indonesia
GoTo Gojek Tokopedia Tbk
Merdeka Copper Gold Tbk
Telekomunikasi Indonesia
Tower Bersama Infrastruct

Industry Sector

Finance	39.96%
Infrastructure	18.46%
Energy	11.03%
Basic Industry	9.55%
Technology	7.84%
Consumer Non-Cyclical	4.44%
Property	4.43%
Industry	2.13%
Health	0.87%
Transportation	0.67%
Consumer Cyclical	0.63%

Key Fund Facts

Fund Size (in bn IDR)	IDR 7.22
Risk Profile	Aggressive
Launch Date	27 Oct 2021
Fund Currency	Indonesian Rupiah
Launch Date NAV Price	IDR 1,000.00
Pricing Frequency	Daily
Investment Management Fee	2.00% p.a.
Custodian Bank Name	Bank HSBC Indonesia
Total Unit	6,783,099.1685

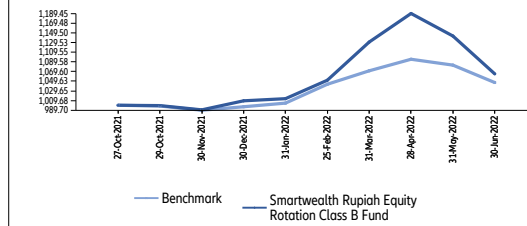
Price per Unit	
(As of Jun 30, 2022)	IDR 1,064.83

Managed by PT. Asuransi Allianz Life Indonesia

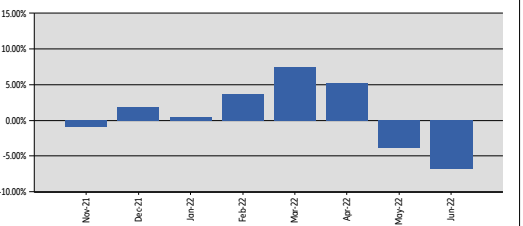
	1 Month	3 Months	6 Months	1 Year	3 Years	5 Years	YTD	Since Inception
Smartwealth Rupiah Equity Rotation Class B Fund	-6.84%	-5.81%	5.51%	N/A	N/A	N/A	5.51%	6.48%
Benchmark*	-3.32%	-2.26%	5.02%	N/A	N/A	N/A	5.02%	4.69%

*Jakarta Composite Index (JCI)

Unit Price Curve of Smartwealth Rupiah Equity Rotation Class B Fund (Since Inception)



Monthly Performance of Smartwealth Rupiah Equity Rotation Class B Fund



Manager Commentary

Global Equities closed lower in June, S&P 500 closed -8.39% in the month of June as anxieties over a possible recession continue to weigh on investor sentiment. This marks the worst half-year drop since 1970 for the S&P 500 index. In addition, other indices such as the Dow Jones Industrial Index, Nasdaq Index, and MSCI World Index, closed -6.71%, -8.71%, -8.77% respectively. Fed Chairman, Jerome Powell has stated that, it would be challenging to control inflation without increasing the risk of potential recession. Jakarta Composite Index has also recorded a return of -3.32% in the month of June as foreign investors recorded an outflow of USD 501 mn. Bank Indonesia has kept the 7DRR rate unchanged in the month of June. BI has also kept the plan for the Required Reserve Ratio hike in the month of July to 7.5%. Indonesian 10-Year Govt Bond yield closed 0.2% higher, at 7.25%, while Indonesian June CPI accelerate to 4.35% YoY and 0.61% MoM.

About Allianz Indonesia

PT Asuransi Allianz Life Indonesia was founded in 1996 and is part of Allianz Asia Pacific which has been present in the region since 1910. Allianz Group is a leading insurance company and asset manager in the world with over 129 years of experience and provides a variety of personal and insurance services, companies, ranging from property, life and health insurance to credit insurance and business insurance services globally.

Disclaimer:

Smartwealth Rupiah Equity Rotation Class B Fund is unit linked fund offered by PT. Asuransi Allianz Life Indonesia (Allianz). This fact sheet is prepared by Allianz. The information presented is for informational use only. The performance of the fund is not guaranteed and the value of the units and the income from them may increase or decrease. Past returns and any forecast are not necessarily a guide to future performance. Allianz does not warrant or make any representations regarding the use or the results of the use of the figures generated in terms of their correctness, accuracy, reliability, or otherwise. You are advised to seek your financial consultant before making any investment.